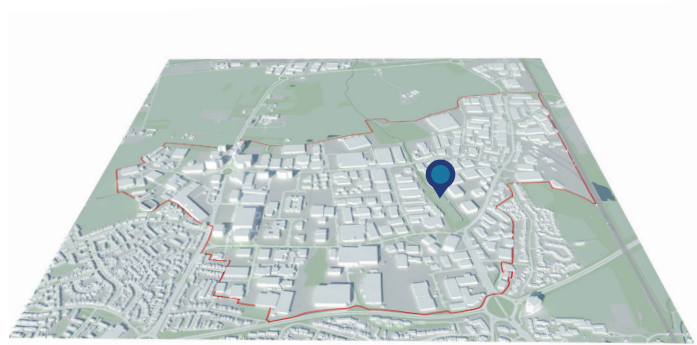


Crawter’s Brook



Location:

An area within Crawters Brook People’s Park has been identified as a site for enhancements as part of this micro-parks project.

Crawter’s Brook is a north-south linear park between Gatwick Road and Fleming Way. It falls within zone 4 (green) but also forms the boundary with zone 2 (blue).

Site Features:

- Green oasis away form busy roads
- Attenuation basin with new boardwalks and seating
- Crawters Brook
- Mature woodland
- Remnant light features
- Remnant paths
- Remnant fence posts

Considerations:

- unsightly concrete boundary wall to the east
- dense woodland
- remnants of concrete infrastructure throughout site
- recent new boundary treatments
- Daylighting the brook



Formalised path made of MOT type 1 meanders through woodland



Remains of concrete fence post create a rhythmic arrangement



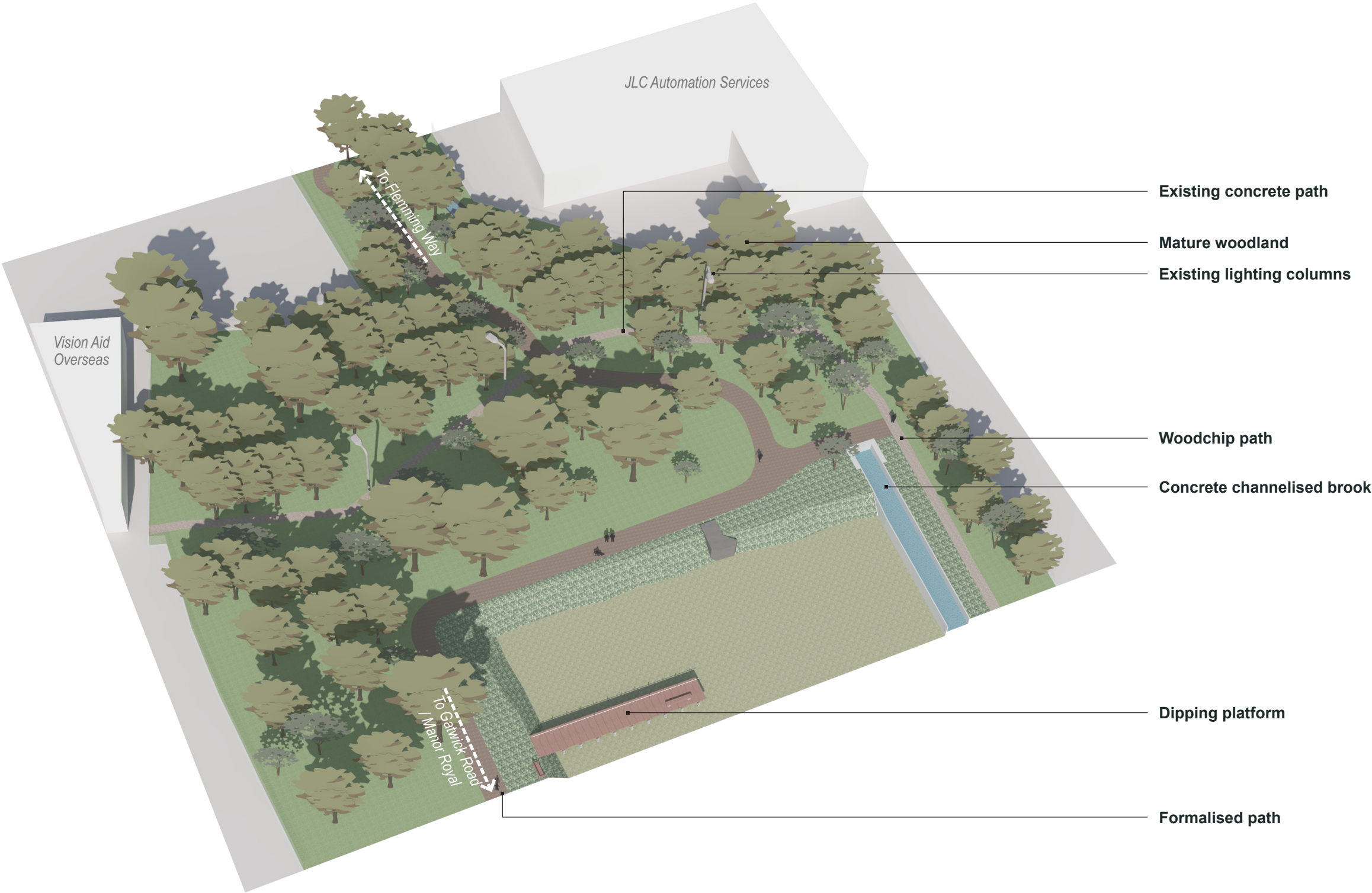
Concrete path leading to potential location of public art



Crawters Brook is a straight drainage channel with concrete banks



Crawter’s Brook - existing site





Crawter’s Brook

Design Intent:

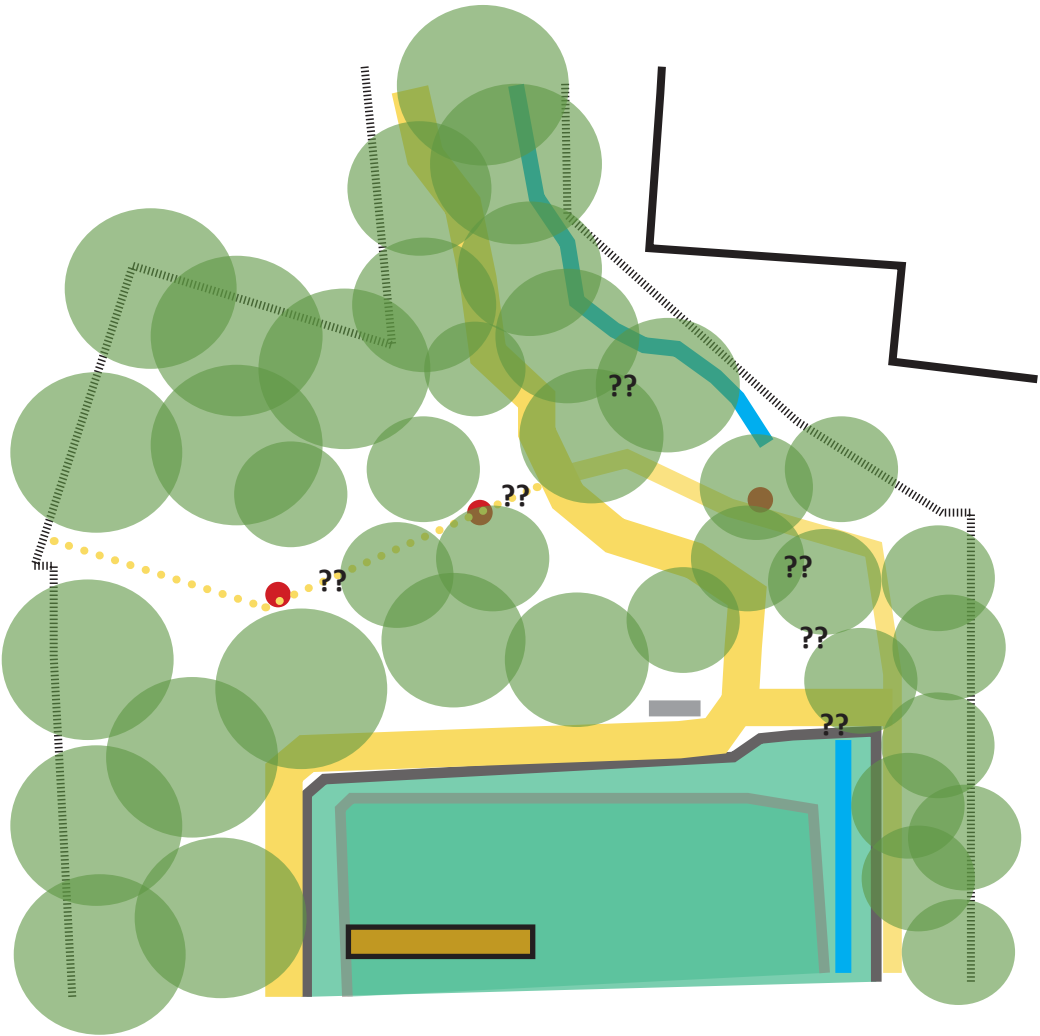
‘Breathing additional life into this already well loved and essential green lung’

Crawter’s Brook Peoples Park is already a well used and well loved special place within Manor Royal.

Improvements made to Crawter’s Brook back in 2017 were founded on sense of place, access to nature and providing a connection between Manor Royal/ Gatwick Road and Fleming Way.

The intent is to use public art to inform further improvements within the centre of this People’s Park, complimenting the previous enhancements in keeping with the distinctive character and sense of place.

- Attenuation basin
- Existing dipping platform
- Existing path
- Existing trees retained
- Remnant path and lighting
- Brook
- Existing boundary
- Existing woodchip path
- ?? Opportunity for Public Art intervention
- Potential bench





Crawter’s Brook- emerging concept

